

PAINT BOOTH - Industrial



LE151
LED



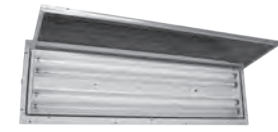
241 LED - 241
LED and Fluorescent



260/261 LED - 260/261
LED and Fluorescent



280/281
Fluorescent



Slim LED - Slim Light
LED and Fluorescent



400 LED - 400
LED and Fluorescent



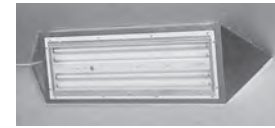
400SLB
Fluorescent



440T/440 THO
Fluorescent



380 LED - 380
LED and Fluorescent

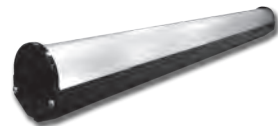


**Corner/Hip
Booth Mount**
for Slim LED
and Slim Light

INSPECTION - Industrial

UL1598 General Applications - UL8750

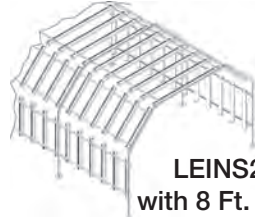
Inspection Tunnel Mount Examples



LEINS2 / INS2
LED and Fluorescent



LEINS3 / INS3
LED and Fluorescent



LEINS2 / INS2
with 8 Ft. fixture top
horizontal mount



LEINS3 / INS3
with 4 Ft. fixture top
horizontal mount



LDPI began designing, developing, manufacturing and distributing light fixtures in 1981. Since that time we have been recognized as an industry leader in fixtures that meet the physically demanding requirements of industrial environments. For many of our fixtures it is all about the mechanical enclosure that is designed, thoroughly tested and agency-approved to confirm their unique ability to withstand the rigorous environmental conditions they will be exposed to. We specialize in fixtures that illuminate areas that are hazardous in nature, but we are also known for industrial task, inspection, and general purpose fixtures that withstand the test of time while providing the correct amount of light to ensure that workers can clearly see what they are producing and assembling. Challenge Us today with your project!



- Material Handling
- Multi Axis Personnel Lifts
- Personnel Lifting Solutions
www.lpi-inc.com



- OEM Custom Fabrication
- Weldments
- Machining - Paint
www.pro-cise.com



- Industrial Distribution
- Material Handling Lifts
- Tank Top Service Lifts
www.badgerie.com



TF: 1-800-854-0021 • PH: 715-839-9585
Email: sales@ldpi-inc.com • www.ldpi-inc.com



Product Guide 2016

Lighting for Hazardous and Industrial Environments



Bright Ideas. Innovative Solutions.

GENERAL - Commercial & Institutional Facilities • Industrial

UL1598 General Applications - UL8750



LE101
LED



LE121
LED



LEFP
LED



222
Fluorescent



229H
Fluorescent



236
Fluorescent

WET/DAMP - Food & Beverage • Industrial • Pulp & Paper • Shipyards/Marine • Water Treatment

UL1598 Wet/Damp - UL8750



LE201
LED



LE202/LE203
LED



LEVP
LED



240 8 Ft.
Fluorescent



376
Fluorescent



379i
Fluorescent

**MARINE - Industrial • Pulp & Paper
Shipyards/Marine • Water Treatment**

UL1598A Marine Outside - UL8750



LE300
LED



384
Fluorescent

HAZARDOUS - Chemical Processing • Industrial • Oil/Gas • Shipyards/Marine • Water Treatment

CI D2 Grps A,B,C,D



240 LED
LED



LE401
LED



LEHL
LED



440 2X4
Fluorescent



CFL
Compact Fluorescent



240
Fluorescent



LE451
LED



H LED
LED



Induction



HID FL



HID H



HID H2

EXPLOSION PROOF

Chemical Processing • Grain Processing • Metals & Mining • Oil/Gas • Water Treatment

CI D1 Grps C,D



380 LED
LED



380
Fluorescent



HID XP



HID XP2

PORTABLE LIGHTING - Carts

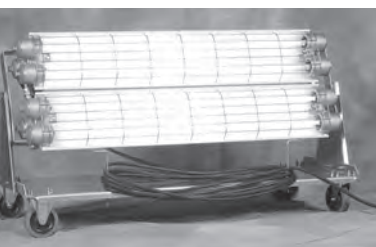
We can custom mount any fixture to make it mobile.



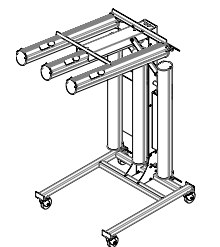
**Portable Task and Inspection
Light Carts**



**General Location
Light Carts**



**Explosion Proof Fixtures
Portable Cart**



**Inspection Cart for
LEINS2 or INS2 Fixtures**