

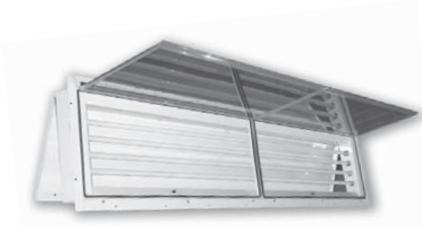
280/281 SERIES

VAPOR/DUST PROOF LIGHTING

DATE: _____ PROJECT MGR: _____

JOB: _____

PN: _____



Model 280: Front and rear access



Model 281: Rear access only

APPLICATIONS

Paint Spray Booths
Clean Rooms
(Class 100 - 100,000)
Locker Rooms
Computer Areas
Damp Locations
Fuel Storage

The 280/281 Series is a product designed specifically for Paint Spray Booths. With a wider fixture design these products will provide increased photometric output and efficiencies. These 4 lamp 8' fixtures are available in wattages including 59, 86, 95 or 110 watts. The 280 Series allows for both Front and Rear access using a paint spray cutoff switch when either front door frame is opened. The 281 Series is a rear access only fixture and does not require paint spray cutoff. Both units carry multiple listings from ETL for Class I Div. 2 & Class II Div. 2 applications. Must be mounted hinge side up. Lamps not included.

SPECIFICATIONS

LISTINGS: ETL listed for U.S. and Canada
Class I Division 2 Groups A,B,C,D
T3C (160 degree C) operating code
Class II Division 2 Groups F,G
T3C (160 degree C) operating code
Listed for locations having deposits of readily combustible paint residues.



FEATURES: 20 Gauge steel construction with white baked enamel finish which creates a durable, highly reflective finish.
Housing styles for either front or rear accessibility in the Series 280, or rear access only in the Series 281.


LENS: 3/16" clear tempered glass.

ELECTRICAL: Paint spray cutoff switch for each front door frame access of the Series 280.
Available in 59, 86, 95 or 110 watts in T8, T8HO, & T12HO lamps.
Voltages of 120, & 277 volts.

OPTIONS: ALL OPTIONS ORDERED SEPARATELY
EM: Emergency battery backup ballast
120 or 277V - MUST SPECIFY
Wire whip 8 Ft. - 5901: 3-wire (281) or 5902: 5-wire (280)

• MOUNTING KITS - ordered separately - see page 94
Panel stiffener kit #1728 (fits 18 gauge panels)

NOTE: Normally open magnetic switches are intended to be used to trigger a relay (furnished by others) which disables the paint system. Because of the small capacity of the switch, a solid state relay is recommended. It may be desired by others to utilize a separate power supply to segregate the relay (furnished by others) from the lighting power supply.
The magnetic switch IS NOT designed to directly control light operation!
The magnetic switch is rated for 10 watts resistive at a maximum of 300 VAC.

CAUTION:  Overloading the switch circuits WILL cause failure.
LDPI, Inc. recommends having a certified electrician/engineer review loads to ensure that overloading of switch does not occur.

VAPOR/DUST PROOF LIGHTING



MOUNTING

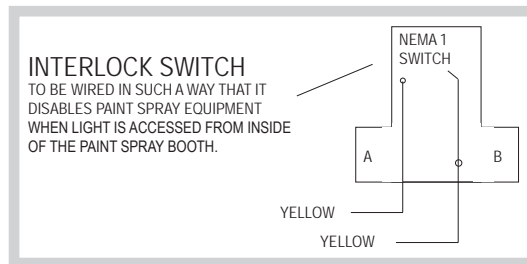
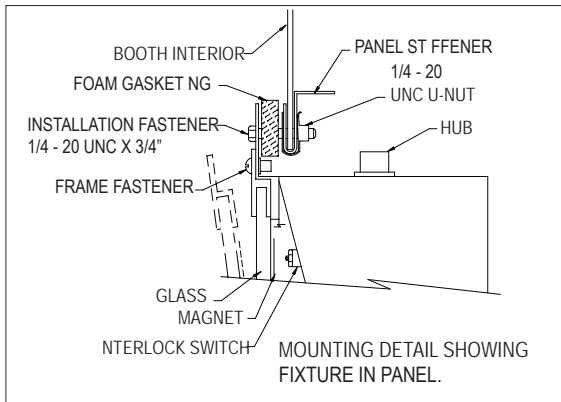
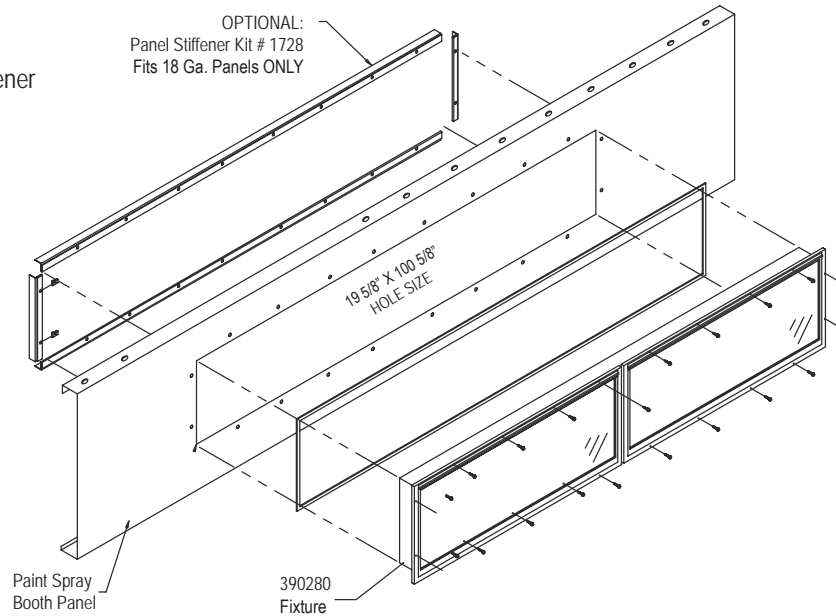
FOR LDPI, INC. FIXTURES



www.ldpi-inc.com

280/281 Series

Part Number: 1728 Panel Stiffener and Interlock Switch



IMPORTANT:

Normally open magnetic switches are intended to be used to trigger a relay (furnished by others) which disables the paint system. Because of the small capacity of the switch, a solid state relay is recommended. It may be desired by others to utilize a separate power supply to segregate the relay (furnished by others) from lighting power supply. The magnetic switch is rated for 10 watts (resistive) at a maximum of 300 VAC.

The magnetic switch is NOT designed to directly control light operation.

CAUTION: Overloading the switch circuits will cause failure. LDPI® recommends having a certified electrician/engineer review circuit loads to insure that overloading of switch does not occur.

