

# 400 SERIES

## PAINT BOOTH LIGHTING

DATE: \_\_\_\_\_ PROJECT MGR: \_\_\_\_\_

JOB: \_\_\_\_\_

PN: \_\_\_\_\_



### APPLICATIONS

Paint Spray Booths  
Clean Rooms  
(Class 100 - 100,000)  
Locker Rooms  
Computer Areas  
Damp Locations  
Fuel Storage

The 400 Series Rear Access product is an ideal paint spray booth product when a rear access fixture is desired. The 400 Series is also a vapor proof product with an ETL listing of Class I Division 2 rating. This series now has a 2' fixture as well as the 4' fixture cataloged. The 4' fixture comes in 2, 4 & 6 lamp with the following lamp options: T8 32W, T8HO 44W, & T5HO 54W lamps. The 2' - 3 lamp fixture uses (3) T8 17W lamps. Lamps not included.

### SPECIFICATIONS

#### LISTINGS:

ETL listed for U.S. and Canada  
Class I Division 2 Groups A,B,C,D  
T3C (160 degree C) operating code  
Class II Division 2 Groups F,G  
T3C (160 degree C) operating code  
Listed for locations having deposits of readily combustible paint residues.  
UL Class I Division 2 Groups A,B,C,D for the 421 & 441 series T8 32W only.  
Meets UL 844 standards for hazardous locations  
Meets UL 1598 Standards for wet/damp locations  
Meets NFPA 33 standards for spray applications using flammable or combustible materials.



#### FEATURES:

Piano hinged rear access fixture - easy relamping.  
Telescopic/spring loaded lamp holders  
20 gauge (enclosed & gasketed) steel construction with white baked enamel finish which creates a durable, highly reflective finish.

#### LENS:

3/16" clear tempered glass.

#### ELECTRICAL:

Available in 2 Ft. 17 watt T8 lamps and 4 Ft. 32, 44 and 54 watts, T8, T8HO and T5HO lamps. Voltages of 120, 277, 347 and 480.

#### OPTIONS:

ALL OPTIONS ORDERED SEPARATELY  
5901: 8 Ft. 3-wire whip  
Lens and fixture preservation: lens film and blast booth lens cover - see page 125

### PAINT BOOTH LIGHTING



# 400 SERIES

## PAINT BOOTH LIGHTING



www.ldpi-inc.com

Series	Watts	Lamp Qty	Hub	Order #	Voltage
390231 (2 ft. 3 lamp)	17W T8	3	1/2" NPT	390231 3546	120-277 Volts 50/60 Hz
390421 (4 ft. 2 lamp)	32W T8	2	1/2" NPT	390421 3613	120-277 Volts 50/60 Hz
		2	1/2" NPT	390421347 3276	347 Volts 60 Hz
	32W T8HLO	2	1/2" NPT	390421 6975	120-277 Volts 50/60 Hz
	44W T8HO	2	1/2" NPT	390421120 4156	120 Volts 60 Hz
		2	1/2" NPT	390421277 3794	277 Volts 60 Hz
54W T5HO	2	1/2" NPT	390421 3265	120-277 Volts 50/60 Hz	
	2	1/2" NPT	390421 5420	347-480 Volts 50/60 Hz	
390441 (4 ft. 4 lamp)	32W T8	4	1/2" NPT	390441 3546	120-277 Volts 50/60 Hz
		4	1/2" NPT	390441347 3125	347 Volts 60 Hz
	32W T8HLO	4	1/2" NPT	390441 6974	120-277 Volts 50/60 Hz
	44W T8HO	4	1/2" NPT	390441120 4157	120 Volts 60 Hz
		4	1/2" NPT	390441277 3792	277 Volts 60 Hz
54W T5HO	4	1/2" NPT	390441 4843	120-277 Volts 50/60 Hz	
	4	1/2" NPT	390441 5421	347-480 Volts 50/60 Hz	
390461 (4 ft. 6 lamp)	32W T8	6	1/2" NPT	390461 3546	120-277 Volts 50/60 Hz
		6	1/2" NPT	390461347 3125	347 Volts 60 Hz
	32W T8HLO	6	1/2" NPT	390461 7059	120-277 Volts 50/60 Hz
	44W T8HO	6	1/2" NPT	390461120 4157	120 Volts 60 Hz
		6	1/2" NPT	390461277 3792	277 Volts 60 Hz
54W T5HO	6	1/2" NPT	390461 3265	120-277 Volts 50/60 Hz	
	6	1/2" NPT	390461 5420	347-480 Volts 50/60 Hz	

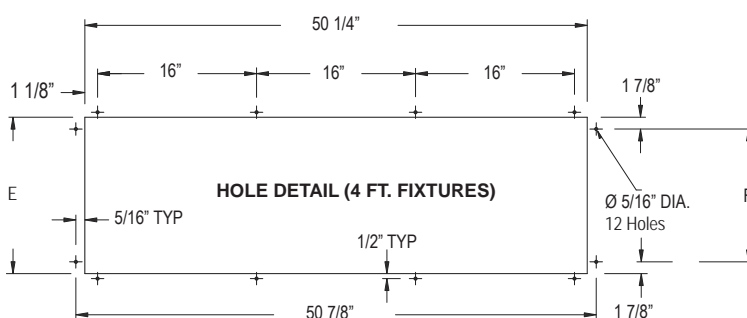
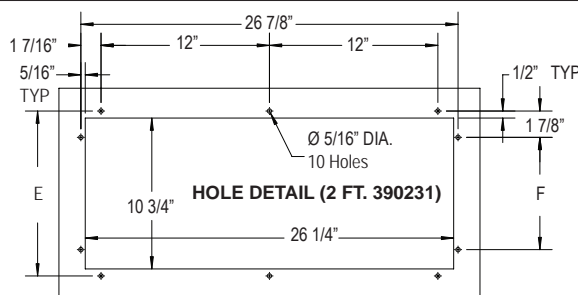
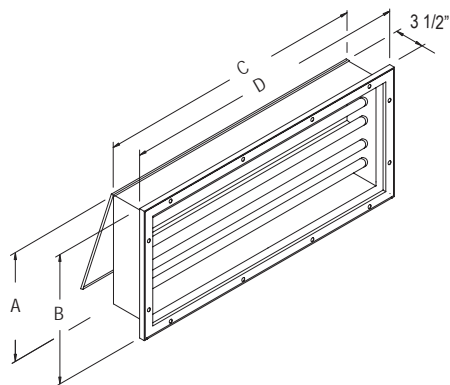


LAMPS SOLD SEPARATELY (Multiple voltages available, consult factory)

### DIMENSIONS (Fixture dimensions are nominal. Cut-out dimensions are actual.)

Mounting - See Page 97

MODEL	FIXTURE DIMENSIONS				MOUNTING DIMENSIONS	
	A	B	C	D	E	F
390231	10 1/2"	12 1/2"	26"	28 3/8"	11 3/4"	8"
390421	10 1/2"	12 1/2"	50 1/4"	52 3/8"	10 3/4"	7"
390441	15 1/2"	17 1/2"	50 1/4"	52 3/8"	15 3/4"	12"
390461	20 1/2"	22 1/2"	50 1/4"	52 3/8"	20 3/4"	17"



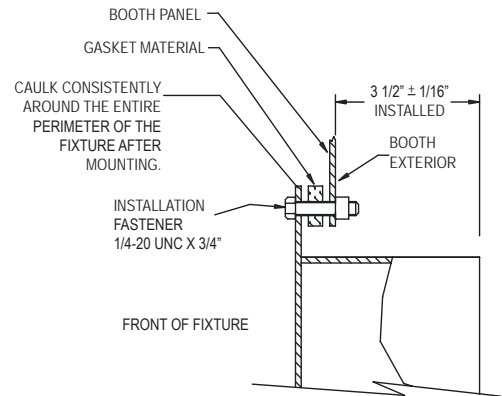
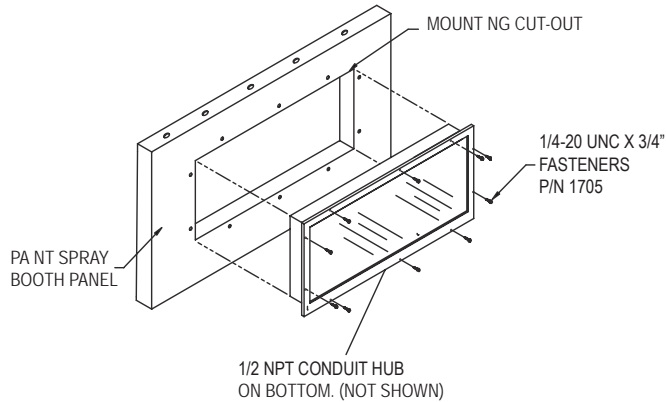
# MOUNTING

FOR LDPI, INC. FIXTURES

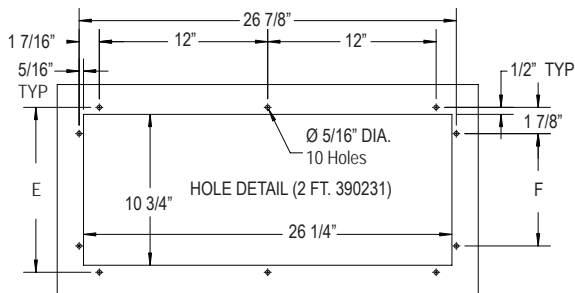


www.ldpi-inc.com

## 400 Rear Access Series



### MOUNTING HOLE DIMENSIONS



MODEL	FIXTURE DIMENSIONS				MOUNTING DIMENSIONS	
	A	B	C	D	E	F
390231	10"	12 1/2"	26"	28 3/8"	11 3/4"	8"
390421	10"	12 1/2"	50"	52 3/8"	10 3/4"	7"
390441	15"	17 1/2"	50"	52 3/8"	15 3/4"	12"
390461	20"	22 1/2"	50"	52 3/8"	20 3/4"	17"

