

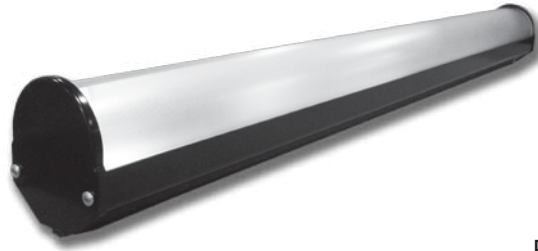
INS2 SERIES

INSPECTION LIGHTING

DATE: _____ PROJECT MGR: _____

JOB: _____

PN: _____



PATENT PENDING

APPLICATIONS

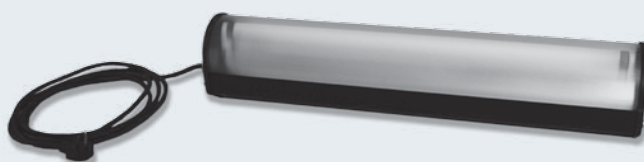
Paint Inspection
Plastic Inspection
Defect Detection

INS2 fixture is specifically designed for inspection and defect detection applications. The proprietary refractor on the INS2 fixture creates distinct luminance edges on painted surfaces which significantly increases the visibility of topographic defects such as dirt in paint, runs, sags, craters, etc. This fixture is available in multiple lengths and can be installed as a stand-alone unit or in a continuous row up to 16' long. It features a black powder coated housing and end caps with an integrated channel on the backside of the housing to allow for surface, pendant, cable or various other mounting options. Lamps included.

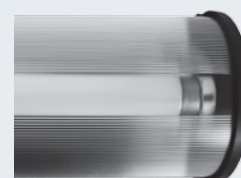


SPECIFICATIONS

LISTINGS:	UL listed 1598 U.S. and Canada
HOUSING/FINISH:	Black powder coat housing and end caps 6063 T6 Extruded aluminum Custom powder coat colors or anodized finishes available upon request.
REFLECTOR:	Symmetrical 91% reflectance
DIFFUSER:	Extruded acrylic, UV stabilized Proprietary surface finish for inspection and defect detection applications.
END CAPS:	Die formed aluminum
HARDWARE:	Zinc plated steel
MOUNTING:	Integrated channel on back side of housing allows for surface, pendant, cable, or any other type of desired mounting. (Mounting hardware NOT included)
ORIENTATION:	Horizontal, vertical, angular, lamp up, or lamp down
HUB SIZES:	1/2" on one end standard
ELECTRICAL:	Available in 17, 32 and 59 watt with T8 lamps Voltages: 120, 277, 120/277 and 347
BALLAST TYPE:	Instant start standard
LAMP HOLDER(S):	Tombstone style, twist lock
OPTIONS:	ALL OPTIONS ORDERED SEPARATELY Cord and plug (specify voltage) • MOUNTING KITS - ordered separately - see page 98



2 Ft. fixture with optional 6 Ft. cord and plug



Diffuser Detail

INSPECTION LIGHTING



INS2 SERIES

INSPECTION LIGHTING



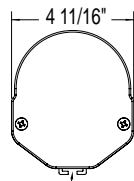
www.ldpi-inc.com

SERIES	LAMP TYPE	LAMP QTY	LENGTH (Ft.)	VOLTAGE	FINISH	CORD/PLUG
INS2	T8: 17W (2 Ft.) 32W (4 Ft.) 59W (8 Ft.)	1L: 1 Lamp 2L: 2 Lamp 3L: 3 Lamp 4L: 4 Lamp	2: 2 Ft. 4: 4 Ft. 8: 8 Ft. 12: 12 Ft. 16: 16 Ft.	120: 120V 277: 277V UNV1: 120/277V 347: 347V	PB: Powder Coat Black AB: Anodized Black	C6: 6 Ft. Cord no plug CP6: 6 Ft. Cord with plug

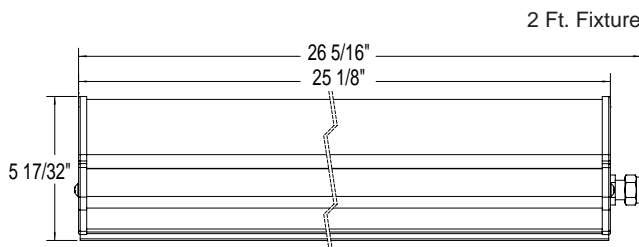
Available Lamp Configurations		
Nominal Fixture Length	QTY of Lamps	Nominal Lamp Length
2 Ft.	1	24 in.
4 Ft.	1	48 in.
8 Ft.	1	96 in.
8 Ft.	2	48 in.
12 Ft.	3	48 in.
16 Ft.	2	96 in.
16 Ft.	4	48 in.

NOTE:

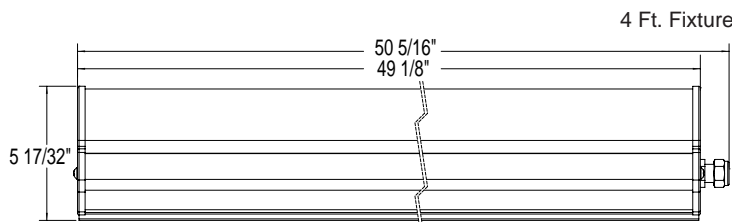
UNV1 (Universal voltage) is standard on fixtures without cords.
When ordering fixture with a cord (CP6) specify the voltage accordingly.
Standard plug is a NEMA rated straight blade.



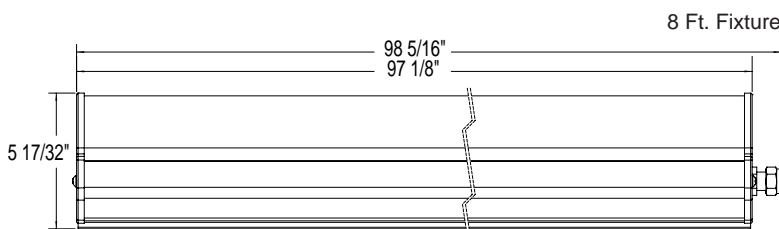
5/16"-18 CARRIAGE
SCREW MOUNTING TRACK



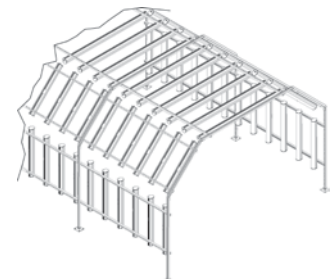
2 Ft. Fixture



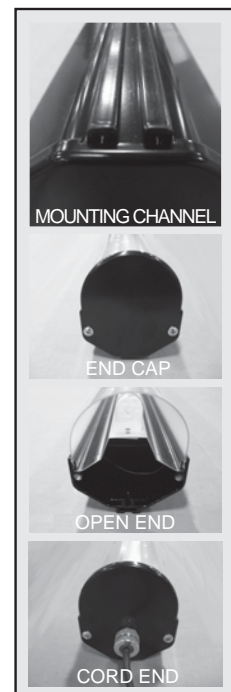
4 Ft. Fixture



8 Ft. Fixture



INS2 Inspection tunnel.



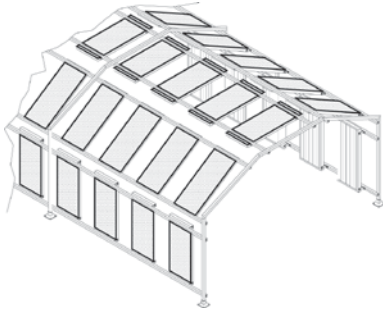
MOUNTING

FOR LDPI, INC. FIXTURES

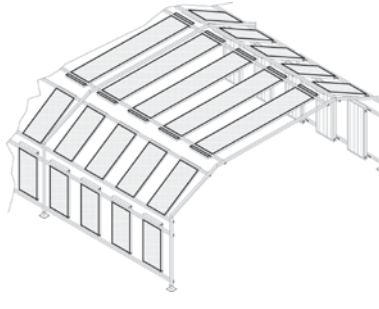


www.ldpi-inc.com

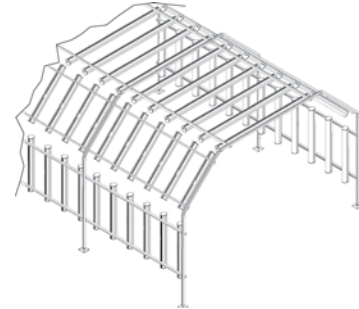
INSPECTION SERIES MOUNTING



4 Ft. fixture top horizontal mount

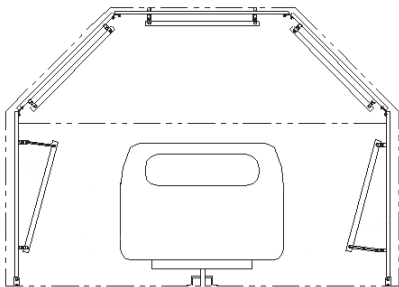


8 Ft. fixture top horizontal mount

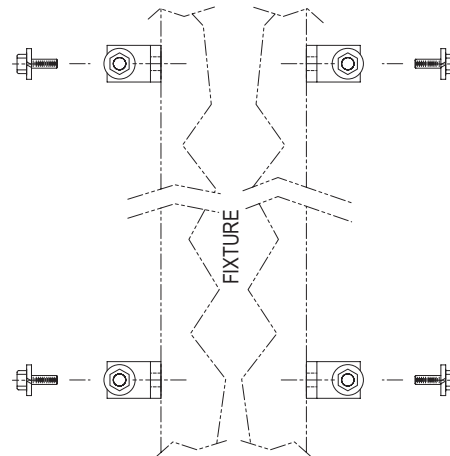


INS2 with 8 Ft. fixture top horizontal mount

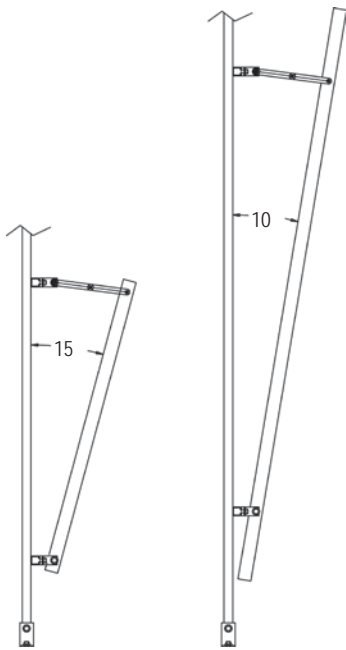
Tunnel provides visual angles from all sides and can be designed with combinations of 4 Ft. and 8 Ft. fixtures to fit product and application requirements. Fixtures mounted 26 1/2" on center. INS2 fixtures mounted 18" on center.



Pivot mount or stationary mounting brackets allow aiming of fixtures for optimal performance.
NOTE: Not available for INS2 fixtures.



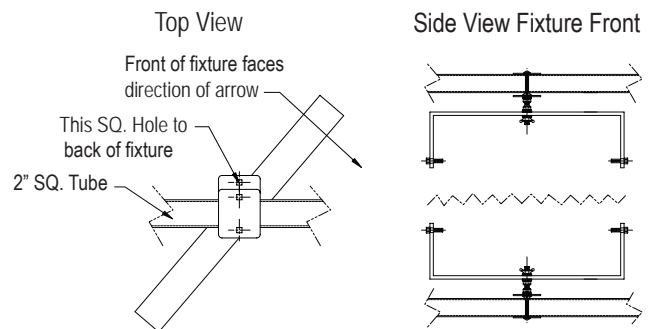
P/N 3564 Stationary Mount Kit
4 Ft. and 8 Ft.
Fluorescent Inspection Lighting



4 Foot Fixture Rotation 8 Foot Fixture Rotation

P/N 3563 Pivot Hinge Mount Kit 4 Ft. and 8 Ft.
Fluorescent Inspection Lighting

INSPECTION CART SWIVEL MOUNT
P/N 4828 Swivel Mount Kit
(For mounting fixtures on a 2" square tube frame. For use on 4 Ft. fixtures only.)



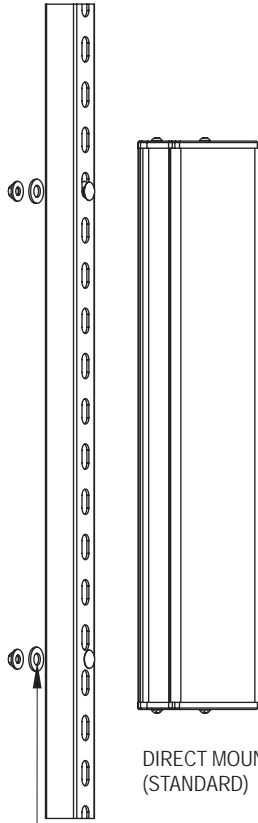
MOUNTING

FOR LDPI, INC. FIXTURES



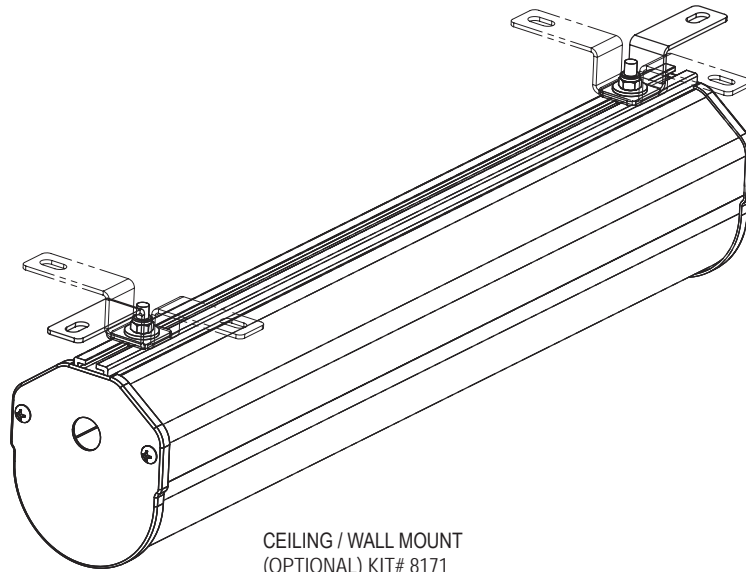
www.ldpi-inc.com

INS2 Series

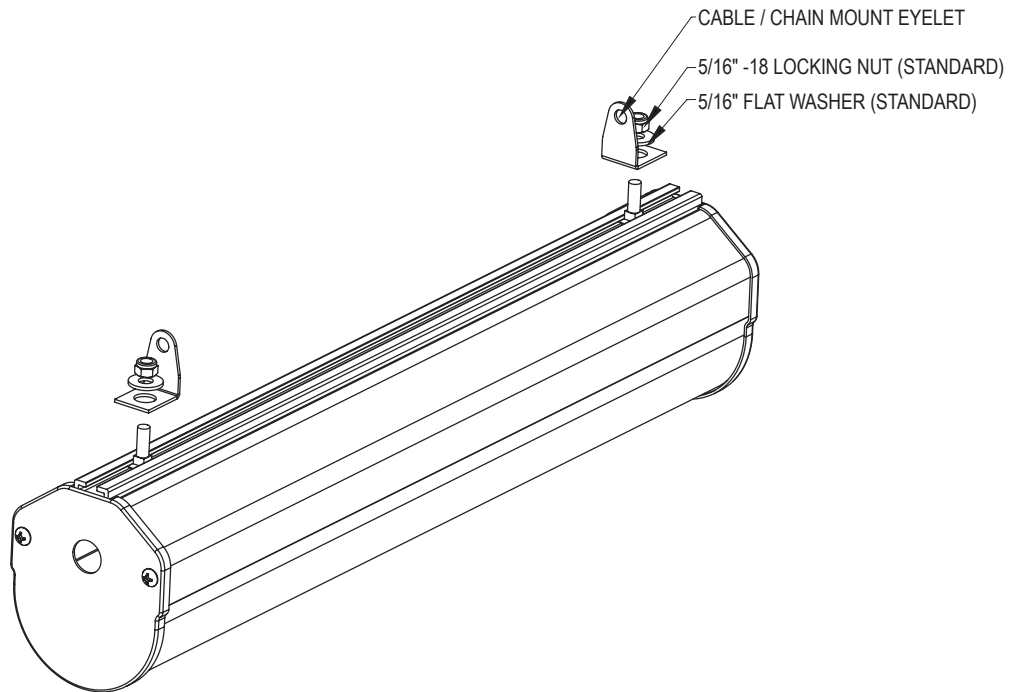


DIRECT MOUNT
(STANDARD)

1/2" WASHER TO BE USED
WHEN MOUNTING TO
MATERIAL 3/32" THICK
OR LESS



CEILING / WALL MOUNT
(OPTIONAL) KIT# 8171



CABLE / CHAIN MOUNT
(OPTIONAL) KIT# 8170