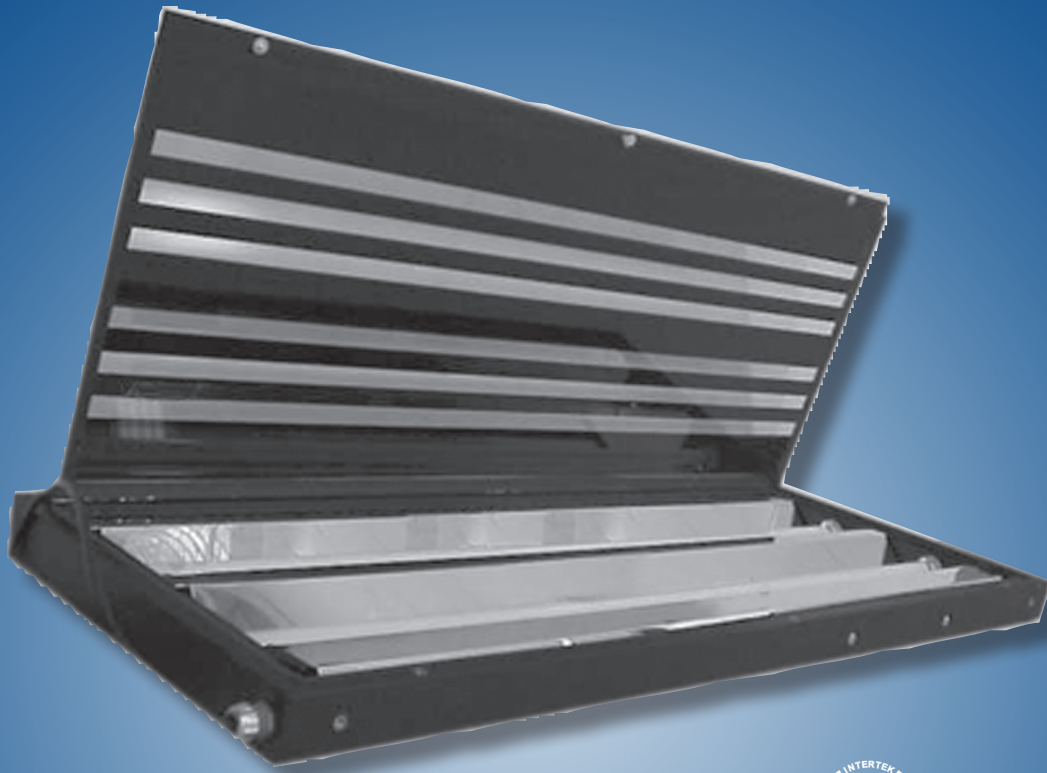


# INSPECTION SERIES



## INSPECTION LIGHTING

- ETL listed for U.S. and Canada
- Class I Div. 2 - Groups A, B, C, D
- Class II Div. 2 - Groups F and G
- Front access door frame
- Slim 2 1/4" thick, one piece, powder coated housing
- 3/16" clear tempered glass with stripes
- Available in 120-277 volt

## APPLICATIONS

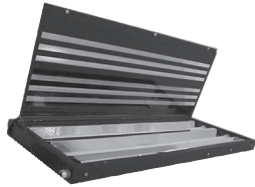
Paint Inspection  
Plastic Inspection  
Defect Detection



[www.ldpi-inc.com](http://www.ldpi-inc.com)



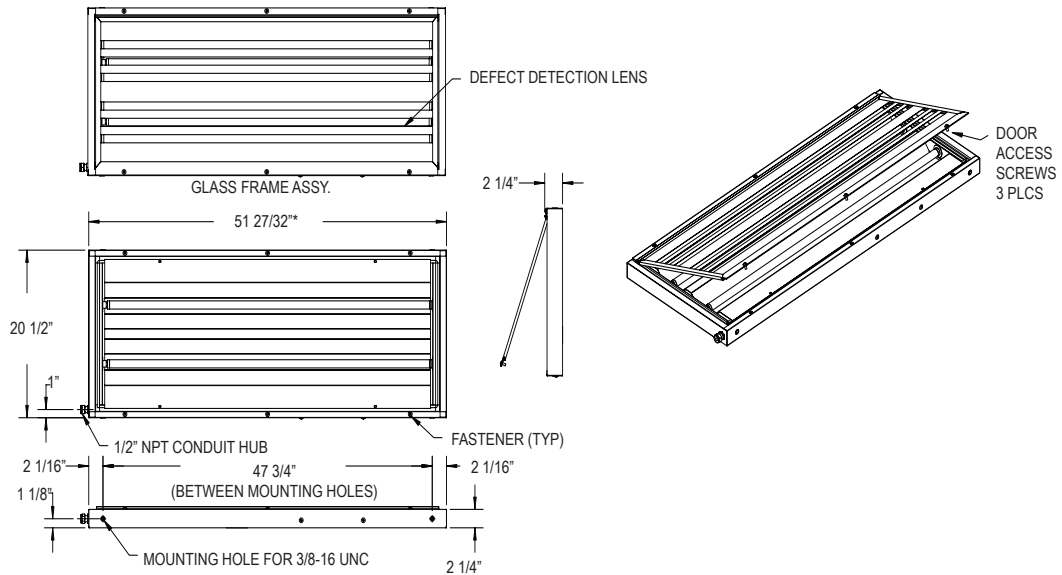
# Bright Ideas Innovative Solutions



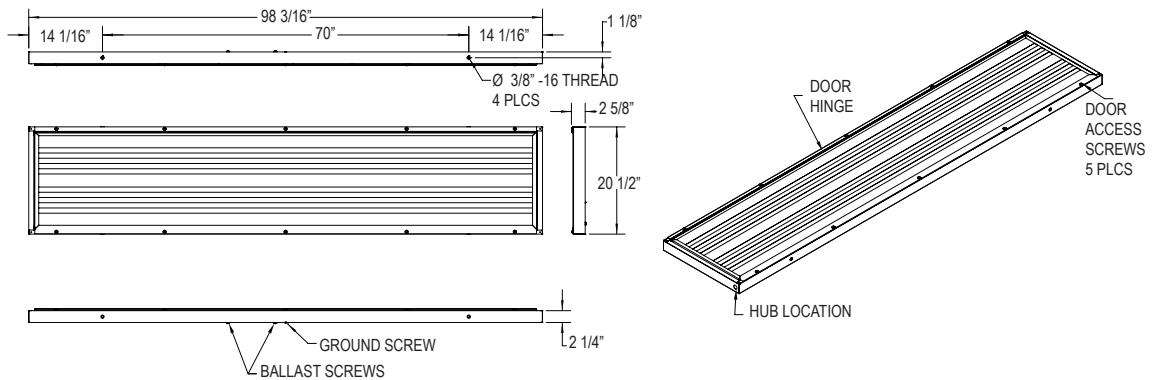
The Inspection Series is a must for any surface finish inspection area! Fixture is constructed from a cold rolled steel one piece housing, with a 93% reflectance specular polished reflector. The lens design creates a well defined lamp image using light and dark contrasts that cause defects in the paint to show for ease of detection and repair. The series is available in 4 or 8' lengths. Optional stands are available to suit any inspection area needs. Horizontal and Vertical cart options (see Portable Lighting Section) also available. Lamps included.

## INSPECTION SERIES DIMENSIONS

4 Ft. 39042LINS



8 Ft. 39082LINS



www.ldpi-inc.com  
sales@ldpi-inc.com  
1-800-854-0021  
(F) 715-839-8145