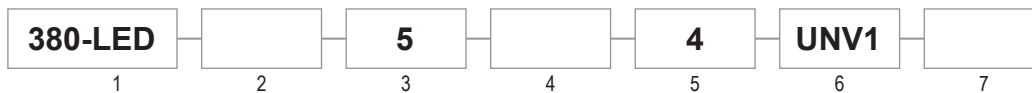


The 380 LED Series is a must for any explosive atmosphere location! This product has five different hub entries at each end, enabling the installer to wire the fixture at more desirable angles. Center driver placement provides a more balanced fixture for ease of installation and balanced weight distribution. The 380 LED Series is available in 4' length for 2, 3, & 4 lamp combinations. LED lamps included.



1 SERIES	2 SOURCE	3 CCT	4 LAMP QTY	5 LENGTH	6 VOLTAGE	7 OPTIONS
380-LED	S: Standard Output Factor H: High Output Factor* *only available in 2L or 4L lamp quantities	5: 5,000K	2L: 2 Lamps 3L: 3 Lamps 4L: 4 Lamps	4: 4 Ft.	UNV1: 120-277VAC (50/60Hz)	P: Polycarbonate Shield WG: Stainless Steel Guard

CERTIFICATIONS

UL844 / CSA-C22.2 No.137 (Hazardous)
 CI D1, Grps C,D
 CI D2, Grps A,B,C,D
 CII D1, Grps E,F,G
 CII D2, Grps E,F,G
 CIII
 Simultaneous Presence (CI & CII)
 Zone 1, Grp IIA and IIB
 Paint Spray Listed
 T-Codes: CID1=T6 / All Others=T4
 UL1598 / CSA-C22.2 No.250 (Wet/Damp)
 UL1598A (Marine Outside)
 Lumen Maintenance (L70) >50,000 hrs. (lamps only)
 CRI >80
 -18°C to 40°C Ambient

PERFORMANCE

Lamp Qty.	Source	Voltage (VAC) 50/60Hz	Input Current (A)	Wattage (W)	Lumen Output* (Lm)
					5,000K CCT
2L	S: Standard Output	120-277	.29 - .13	35	3820
	H: High Output		.41 - .18	49	4940
3L	S: Standard Output		.45 - .19	53	5600
4L	S: Standard Output		.58 - .26	70	7640
	H: High Output		.82 - .36	98	9880
					* Nominal values

CONSTRUCTION

Copper-free cast aluminum housings
 Borosilicate glass tubes
 16ga. aluminum reflector
 Powder coat white (reflector)
 3/4" NPT Hubs
 Weights: Configuration specific, see back for details

Operating Temperature Codes (40° C Ambient)					
CI D1	CI D2	C2 D1	CII D2	CIII	CI & CII Simultaneous Presence
T6=85°C			T4=135°C		

ELECTRICAL

120-277VAC

FEATURES

Robust design
 0°, 45°, and 90° Mounting Angles
 5 Year Warranty

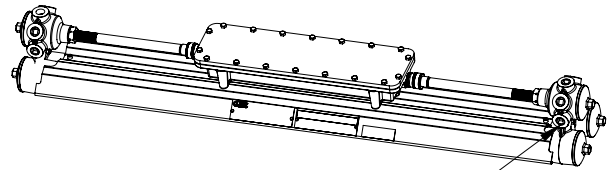
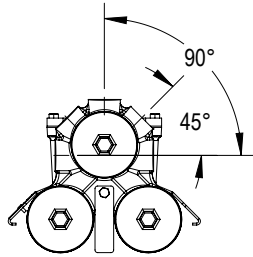
380 LED

LED EXPLOSION PROOF LIGHTING

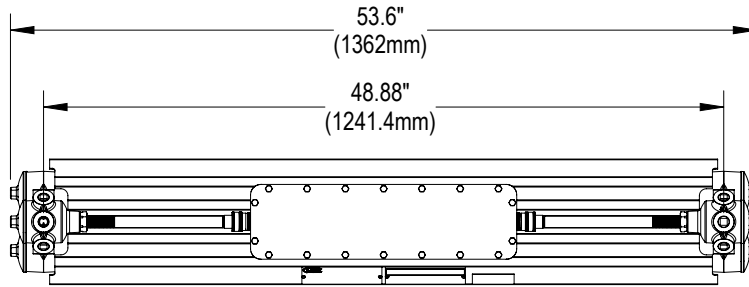
Chemical Processing • Grain Processing • Metals & Mining • Oil / Gas • Water Treatment



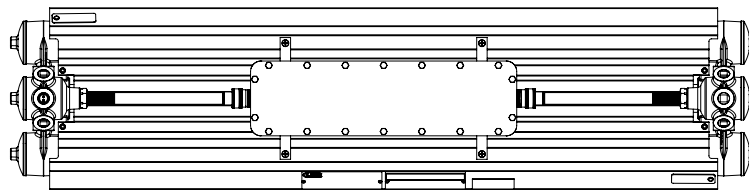
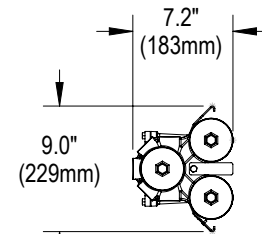
DIMENSIONS



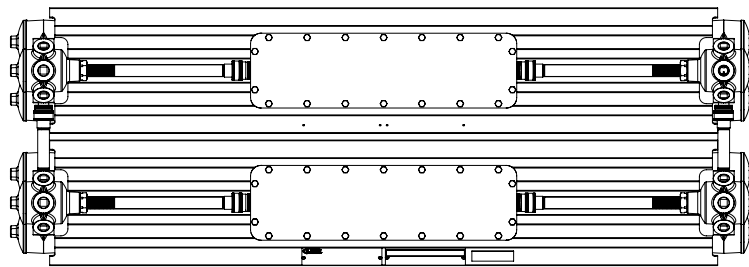
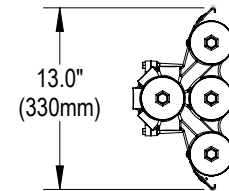
3/4" NPT HUB
(5) PLCS EACH
CASTING END



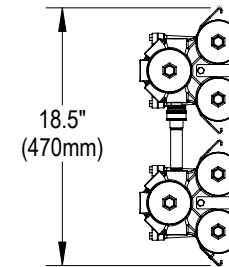
2 Lamp
Weight: 40 lbs.



3 Lamp
Weight: 45 lbs.



4 Lamp
Weight: 80 lbs.



ACCESSORIES (CAN BE ORDERED SEPARATELY)

Accessories	Part Number	Description	
WG: Stainless Steel Guards * * not for use in paint spray applications	4211	2 Lamp Option	
	4557	3 Lamp Option	
	4211 (2) required	4 Lamp Option	
P: Polycarbonate Shields * (+/- 1/16" thickness)	4209	2 Lamp Option	
	4497	3 Lamp Option	
	4209 (2) required	4 Lamp Option	



380 LED

LED EXPLOSION PROOF LIGHTING

Chemical Processing • Grain Processing • Metals & Mining • Oil / Gas • Water Treatment

MOUNTING OPTIONS (ORDERED SEPARATELY, FIELD INSTALLED *)

Part # / Description	Item	Dimensions
4401 2 or 3 Lamp Fixtures Wall / Ceiling Kit (2) Brackets with NPT bolts Safety cable		
4400 4 Lamp Fixtures (Factory Installed) Wall / Ceiling Kit (2) Surface Mount Brackets factory installed	* Factory Installed 	
4405 2 or 3 Lamp Fixtures Drop Mount Kit (2) Brackets (4) NPT Bolts (1) Safety Cable/Chain (4) Shims		
4403 4 Lamp Fixtures Drop Mount Kit (2) Brackets (4) NPT Bolts (1) Safety Cable/Chain (4) Shims		