



Lighting for Hazardous Locations, Industrial & Commercial Applications

Mission

“LDPI, Inc. will provide a wide variety of quality lighting products at a competitive price and meet customer service needs with responsive delivery times, while providing a safe and productive work environment to grow our company profitably.”

www.ldpi-inc.com



*Bright Ideas
Innovative Solutions*

Lighting for Hazardous Locations, Industrial & Commercial Applications

LDPI® Lighting has been a recognized industry leader in manufacturing lighting for hazardous locations, industrial and commercial applications for over 25 years.

www.ldpi-inc.com

• Made in USA •

Products and Services

Located in Eau Claire, WI, LDPI Inc. was created in 1981 as a division of LPI, Inc., dedicated to light fixture manufacturing. LDPI was founded with a vision to manufacture quality lighting products for the paint spray booth manufacturing industry. Since its inception, LDPI, Inc. has become the recognized leader in that area and has been expanding its' original vision to include industrial and commercial lighting products for hazardous and harsh environments. We are continually seeking ways to improve our products and are open to your suggestions for new product design and development to fill a lighting requirement while constantly working to reduce owner's cost of operations.

LDPI, Inc. Sales and Engineering staff work in close relationships with our clientele to develop lighting systems to integrate, not only the appropriate lighting required, but with energy conservation as an important ingredient. The industries served are not only paint spray booth manufacturers but many other harsh and hazardous applications ranging from clean room, explosive and marine environments to inspection, task and wash-down areas.



*Bright Ideas
Innovative Solutions*

Lighting for Hazardous Locations, Industrial & Commercial Applications

MAJOR INDUSTRIES SERVED BY LDPI, INC.



Aircraft & Aerospace



Automotive Assembly Plants



Construction and Agricultural Equipment



Electrical Power and Distribution



Light Rail and Bus Manufacturing



Petroleum Industry



Rail Car and Locomotive Manufacturing



Specialty Industries



Transit Authorities



**Bright Ideas
Innovative Solutions**

Lighting for Hazardous Locations, Industrial & Commercial Applications

MAJOR CUSTOMERS SERVED BY LDPI, INC.



Aircraft & Aerospace

Boeing
Delta Airlines
Martin Marietta
NASA
Northwest Airlines
Solar Turbine
Southwest Airlines
U.S. Air National Guard
United States Air Force
United States Navy



Automotive Assembly Plants

Chrysler Motors
Ford Motor Company
General Motors
Honda
Hyundai Motor Company
KIA
Mercedes Benz
Toyota Motors



Construction & Agricultural Equipment

Case New Holland
Caterpillar
John Deere
Komatsu



Electrical Power & Distribution

Siemens Power
Thomas & Betts



Light Rail & Bus Manufacturing

Bluebird Bus
Bombardier Light Rail
Thomas Bus



Petroleum Industry

Brown & Root
Exxon/Mobil
National Oilwell
Phillips/Conoco
Schlumberger
Shell Oil Company (hydrogen service stations)



Rail Car & Locomotive Manufacturing

American Railcar
National Steel Car
Union Tank



Specialty Industries

Ammunition Facilities
Chemical Plants
Clean Rooms
Waste Water Treatment Plants



Transit Authorities

AMTRAK
Charleston WV Transit Authority
Long Island Rail
Los Angeles County Metro Transit Authority



Bright Ideas Innovative Solutions

Lighting for Hazardous Locations, Industrial & Commercial Applications

EXPLOSION PROOF LIGHTING



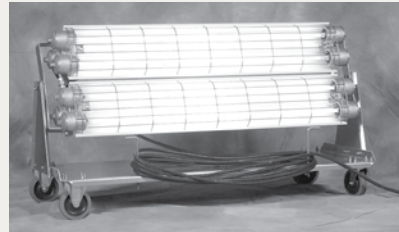
2, 3 or 4-LAMP
4-FOOT FIXTURE

EXPLOSION PROOF LIGHTING XP SERIES

Low Profile, Explosion Proof lighting
For Hazardous Locations,
Paint spray booth, Marine/shipboard
UL listed 595, 844, 1598
5 1/2" Hubs for mounting options
Factory sealed
NEMA 3, 4X 7CD, 9EFG.
Emergency Ballast Battery pack
available for the 2 lamp 4 Ft. fixture.



2 LAMP
2 FOOT FIXTURE



EXPLOSION PROOF PORTABLE CART PORTABLE CART FOR 2, 3 OR 4 LAMP, 4-FT. EXPLOSION PROOF FIXTURES

Lighting for Explosive Environments

The XP Portable Light Cart is manufactured in accordance with all applicable NFPA standards as interpreted by LDPI, Inc. For use in hazardous environments and laboratory applications. Portable lighting solutions for hazardous atmospheres. Light can be directed where you need it most.



GENERAL PURPOSE: 229H SERIES

Open Industrial fixture
UL 1598 approved
Hinged ballast plate for easy access
Electronic Ballast



VAPOR / DUST PROOF: 240 SERIES

UL & ETL listed for U.S. and Canada
Listed for wet locations
Front access fixture for hazardous locations
Hinged front door frame
Sturdy 20 Ga. steel white powder coated housing suitable for outside of paint booths, wet locations, Prep areas, Inspection areas, Sanding, Machining, Coal & Grain dust and Waste water treatment plants.



VAPOR/DUST PROOF: 280/281 SERIES

For spray booth applications.
8 Ft. 4 lamp Fluorescent lighting for hazardous locations.
Model 280 features hinged inside access panels and a hinged rear access panel.
Model 281 features a rear access door panel.
ETL listed U.S. and Canada.



VAPOR/DUST PROOF: 240 SERIES

UL and ETL listed in U.S. and Canada
Spring loaded lamp holders.
Some applications include:
sanding and machining, coal dust, grain dust.



VAPOR/DUST PROOF: 260/261 SERIES

For spray booth applications.
Model 260 features inside access door frame and hinged rear access door panel.
Meets UL and ETL requirements for inside access.
Model 261 features a rear access door panel.
UL and ETL listed U.S. and Canada.
Listed for locations having deposits of readily combustible paint residues.



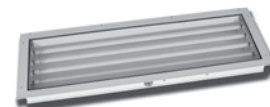
VAPOR/DUST PROOF SLIM LIGHT SERIES

Inside Access For paint spray booth applications. ETL listed U.S. and Canada.
Listed for locations having deposits of readily combustible paint residues.



VAPOR/DUST PROOF 241 SERIES Rear Access

UL and ETL listed in U.S. and Canada.
For paint spray booth applications.
Listed for locations having deposits of readily combustible paint residues.



VAPOR/DUST PROOF REAR ACCESS 400 SERIES

For paint spray booth applications.
ETL listed for U.S. and Canada
Listed for locations having deposits of readily combustible paint residues.



Bright Ideas Innovative Solutions

Lighting for Hazardous Locations, Industrial & Commercial Applications

2X4 TROFFER

Lay-in Fluorescent Lights



2X4 SERIES T-5
440T/440 THO
T-5/T5HO Troffer
Inside access, ideal for clean rooms.
2' X 4' Enclosed and gasketed
Space saving design
Only 2 1/4" deep.
ETL listed for U.S. and Canada



2X4 SERIES T-8
440 2X4
T-8 troffer
2' X 4' Enclosed and gasketed
Inside access
Ideal for clean rooms.
Space saving design
Energy efficient
ETL listed for U.S. and Canada
Can be mounted in a 2" industrial
T-grid ceiling application.

WET / DAMP LOCATIONS



WET/DAMP LOCATIONS: 376 SERIES
Energy efficient
Ceiling or wall mount, 45° Angle or chain hung
Surface mounted waterproof fixture
NSF certified for food processing applications.
UL-1598 rated for wet/damp locations
UL-595 rated for marine: drip proof
IP65 and IP67 rated



WET / DAMP LOCATIONS: 379 SERIES
UL Wet Location
Tested for 270 watts @ 40° C
Tested for 378 watts @ 25° C
NSF Splash Zone
Suitable for: Food Industry, Production,
Bottling, Processing, Cold Storage,
Parking and Warehousing

MARINE LOCATIONS



MARINE LOCATIONS: 384 SERIES
Meets all Coast Guard specifications.
CSA certified for hazardous locations.
UL 844: Class I, Div. 2, groups A, B, C & D.
UL 595: Outdoor marine type (saltwater)
Suitable for industrial, marine/wet,
laboratory and drill rig applications.
Adjustable mounting brackets and lamps included.

PORTABLE TASK / INSPECTION LIGHTING

ACCESSORIES



**CLING-ON
PLASTIC LENS FILM**
Protects fixture lens
from paint overspray.
Applies easily to a
clean lens.



**BLAST BOOTH
LENS COVER**
Helps protect fixture from
high pressure blast media.



CORNER LIGHTING
For panel mounted fixtures, mounts into
a corner/hip of a paint spray booth. For
440 Slim Light applications.



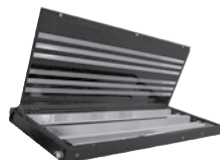
**PORTABLE TASK
LIGHT CART
SINGLE 4-FT FIXTURE**



The single fixture light cart is designed
to provide portable lighting solutions for
applications ranging from Inspection,
Laboratory and general task lighting.
Light fixture options allow you to
customize your cart to fit your work
application requirements.



Optional 2 fixture
vertical or horizontal
mount cart.



INSPECTION SERIES
4 Ft. and 8 Ft. 2 lamp Inspection lighting.
ETL and ETL-C listed for Hazardous locations



3 Fixture vertical cart
options available



**Bright Ideas
Innovative Solutions**

Lighting for Hazardous Locations, Industrial & Commercial Applications

Plank Enterprises, Inc.

A Family of companies consisting of four entities with the primary business practice of manufacturing and distributing products to the industrial and commercial market places around the world.

The formation of Plank Enterprises, Inc.

As a way to create autonomy between the divisions of LPI, Inc., the shareholders, in 1999 changed the name of LPI, Inc. to Plank Enterprises, Inc. in order to create a holding company format. The divisions of the old LPI, Inc. are now formally incorporated into stand-alone entities named LPI, Inc., LDPI, Inc., and Pro~Cise, Inc.



**Badger Industrial
Supply and Equipment, LLC**

Established in 1981, LPI, Inc. began its operations in Osseo, Wisconsin. LPI, Inc. As a manufacturer of personnel lifting and work positioning equipment for the paint finishing industry. LPI marketed its products through paint booth distributors and through direct sales. With the introduction of its line of industrial lifting equipment a few years later, LPI became an industry leader for lifting equipment within the paint finishing marketplace. In 1999 LPI, Inc. was officially Incorporated as a lift manufacturer and has established itself as a leader in "made to order" products through its commitment to research and development, and design flexibility.
www.lpi-inc.com

In 1981 LDPI was created as a division of LPI, Inc., dedicated to light fixture manufacturing. LDPI was founded with a vision to manufacture quality lighting products for the paint spray booth manufacturing industry. In 1999 LDPI, Inc. was officially Incorporated after the restructuring of LPI, Inc., and has become a recognized leader for manufacturing lighting products in the area by expanding its original vision to include industrial and commercial lighting products. From inception, the LDPI product line has grown to cover a wide spectrum of applications. LDPI has diversified the line of paint/powder booth fixtures and added fixtures for wet, harsh, marine, hazardous, general industrial, and clean room applications.
www.ldpi-inc.com

In 1999 Pro~Cise, Inc. was officially Incorporated and established after the restructuring of LPI, Inc. All machining aspects of LPI are merged and Incorporated as Pro~Cise, Inc. Pro~Cise is a designer of precision components for manufacturing processes. The equipment available includes modern CNC turning and machining centers, along with complementary equipment, and contract services on various technical levels.
www.pro-cise.com

In 2003 Badger Industrial Equipment was created as a catalog sales division within LPI, Inc. Badger Industrial Supply is an industrial distribution company specializing in material handling equipment and industrial supplies. In October, 2005, Badger Industrial Supply was incorporated and is now known as Badger Industrial Supply & Equipment, LLC.
www.badgerIE.com



LDPI® Lighting has been a recognized industry leader in manufacturing lighting for hazardous locations, industrial and commercial applications for over 25 years.

www.ldpi-inc.com

• Made in USA •

www.ldpi-inc.com
sales@ldpi-inc.com
1-800-854-0021
(F) 715-839-8145